

AWNINGS & EXTERIOR SIGNAGE

Tools Needed

- Properly Equipped Dilution Center
- 2 Clean Pails
- Multi Surface Tool (MST) and Micro Fiber Pad
- Optional 8 Foot Telescoping Pole
- Alternatively- Utilize standard SYR Interchange handle and a ladder



Product Needed

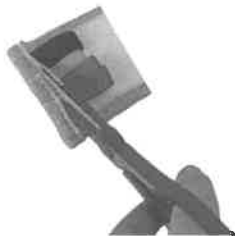
Dawn®
Manual Pot and
Pan Detergent



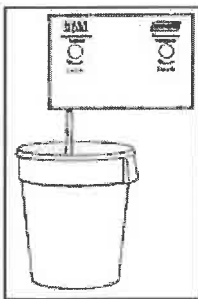
FREQUENCY OF CLEANING: *As needed or per manufacturer's recommended scheduled timing.*

SPECIAL DIRECTIONS FOR THIS TASK: *If a safety ladder or step ladder is necessary for cleaning surfaces or areas associated with this procedure, please be sure to follow the safety ladder or step ladder manufacturer's safety instructions for proper and safe ladder / step ladder usage. If sensitivity to cleaning solutions is a concern, wear single use gloves.*

Multi-Surface Tool (MST)



NOTE: Using a pair of scissors, remove all colored tabs from a new microfiber pad except for blue. The blue tab should remain as this color designates exterior / outdoor use.

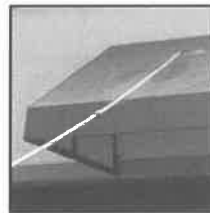


STEP 1

- Fill one clean pail half way with Dawn solution from the dilution center at the 3 compartment sink. Or...
- Fill a clean pail with warm Dawn solution from a freshly prepared 3-compartment sink by dipping the pail into the solution.
- Fill the second clean pail half way with warm clean water from the faucet.

STEP 2

- Saturate 1 microfiber pad in the Dawn solution, wring it out by hand, and attach it to the Multi Surface Tool (MST).
- Attach MST to the 8' telescoping pole or interchange SYR handle.
- Extend the telescoping pole to the desired length if used.



STEP 3

- Clean the awning using steady pressure in an up and down direction. Work in small areas changing the pad as it becomes soiled.



STEP 4

- To rinse the cleaned area, saturate a clean microfiber pad in pail with water, wring it out by hand, and attach it to the MST.
- Rinse the awning using steady pressure in an up and down motion.
- Change both Dawn solution and rinse water as they become dirty.
- Repeat steps 2-4 until all soil is removed from the awning.



STEP 5

- After all the soil has been removed from the awning, bring all tools and pails to the mop sink.
- Agitate microfiber pads in remaining Dawn solution.
- Rinse pads thoroughly under running water at the mop sink.
- Wring pads out by hand and allow to air-dry.



NOTE: You can follow the same steps to clean your exterior signage!



STEP 6

- If used, remove and discard single use gloves.
- Wash hands before returning to the service area.

DRIVE-THRU WINDOW AREA

Tools Needed

- Equipment and supplies to capture and recover cleaning solution and rinse water. See Important Note Below
- Outside Deck Brush
- Broom
- Putty Knife
- Clean Pail
- Hose
- Clean Wiping Cloth or Single-Use Towel



Products Needed

DCT Heavy Duty Degreaser

Spic and Span® Disinfecting All-Purpose Spray and Glass Cleaner (3-in-1)



FREQUENCY OF CLEANING: Weekly, as weather permits.

SPECIAL DIRECTIONS FOR THIS TASK: Do not perform this procedure in freezing weather. If sensitivity to cleaning solutions is a concern, wear single use gloves.

IMPORTANT: When cleaning exterior areas, special steps must be taken to avoid polluting rivers and streams. In most municipalities it is against the Federal Clean Water Act to allow cleaning solutions and rinse water to flow into storm drains or run into the street. All rinse water and cleaning solutions must be collected and disposed of properly:

Use small amounts of cleaning solution and rinse water.

After scrubbing and rinsing, collect all solutions.

Choose between two methods:

1) Use a wet-vac and dispose of collected solution in a sanitary drain (for example, in the mop sink in your restaurant) or;

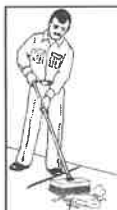
2) Pick up using absorbent granules (kitty litter type products). Then double bag securely in liquid tight plastic bags and put in the trash.

Requirements vary. Your storm Water Pollution Prevention Plan should be reviewed with your local Director of Public Utilities prior to implementation.



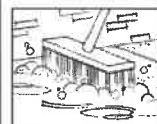
STEP 1

- Mix one gallon DCT Heavy Duty Degreaser and one gallon of water in a clean pail.



STEP 2

- Use putty knife to remove gum from drive-thru surface.
- Pick up trash and sweep up debris before starting cleaning procedure.



STEP 3

- Wet surfaces of section to be cleaned evenly by pouring the solution of Heavy Duty Degreaser from the pail.
- Scrub section of the drive-thru area with a deck brush by applying heavy downward pressure in a back-and-forth motion.

STEP 4

- Let soak for at least five minutes, or longer if convenient.
- Move to another area and repeat Step 3 while allowing the other scrubbed areas to soak.

STEP 5

- Rinse scrubbed areas with a hose or pails of warm water. Use as little water as possible.

NOTE: Be sure to rinse any cleaning solution off door frames if any solution splashed onto them.

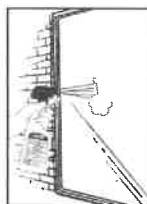
STEP 6

- Collect and discard solution properly using one of the methods previously described.

STEP 7

- Spray 3-in-1 all-purpose cleaner directly onto the drive-thru window.
- Wipe with a clean wiping cloth or single use towel.

NOTE: Clean a small area at a time so the cleaner does not streak. If streaking occurs use less product and/or do not buff completely dry.



STEP 8

- If used, remove and discard single use gloves.
- Wash hands before returning to service area.

SIDEWALKS

Tools Needed

- Equipment and supplies to capture and recover cleaning solution and rinse water. See important note below
- Outside Deck Brush
- Broom
- Putty Knife
- Clean Pail
- Hose



Products Needed

DCT Heavy Duty Degreaser



FREQUENCY OF CLEANING: Daily for spot cleaning, as weather permits. As needed for deep cleaning, as weather permits.

SPECIAL DIRECTIONS FOR THIS TASK: Do not perform this procedure in freezing weather. If sensitivity to cleaning solutions is a concern, wear single use gloves.

IMPORTANT: When cleaning exterior areas, special steps must be taken to avoid polluting rivers and streams. In most municipalities it is against the Federal Clean Water Act to allow cleaning solutions and rinse water to flow into storm drains or run into the street. All rinse water and cleaning solutions must be collected and disposed of properly:

Use small amounts of cleaning solution and rinse water.

After scrubbing and rinsing, collect all solutions.

Choose between two methods:

1) Use a wet-vac and dispose of collected solution in a sanitary drain (for example, in the mop sink in your restaurant) or;

2) Pick up using absorbent granules (kitty litter type products). Then double bag securely in liquid tight plastic bags and put in the trash.

Requirements vary. Your storm Water Pollution Prevention Plan should be reviewed with your local Director of Public Utilities prior to implementation.



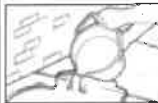
STEP 1

- Mix one gallon DCT Heavy Duty Degreaser and one gallon of water in a clean pail.



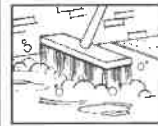
STEP 2

- Use putty knife to remove gum from sidewalk surface.
- Pick up trash and sweep up debris before starting cleaning procedure.



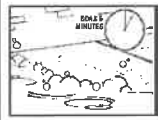
STEP 3

- Evenly apply cleaning solution onto the section of the sidewalk to be cleaned by pouring the Heavy Duty Degreaser solution from the pail.
- Scrub section of the sidewalk with a deck brush by applying heavy downward pressure in a back-and-forth motion.



STEP 4

- Let soak for at least five minutes, or longer if convenient.
- Move to another area and repeat Step 3 while allowing the other scrubbed areas to soak.



STEP 5

- Rinse scrubbed areas with a hose or pails of warm water. Use as little water as possible.



NOTE: Be sure to rinse any cleaning solution off door frames if any solution splashed onto them.



STEP 6

- Collect and discard solution properly using one of the methods previously described.



STEP 7

- If used, remove and discard single use gloves.
- Wash hands before returning to service area.

